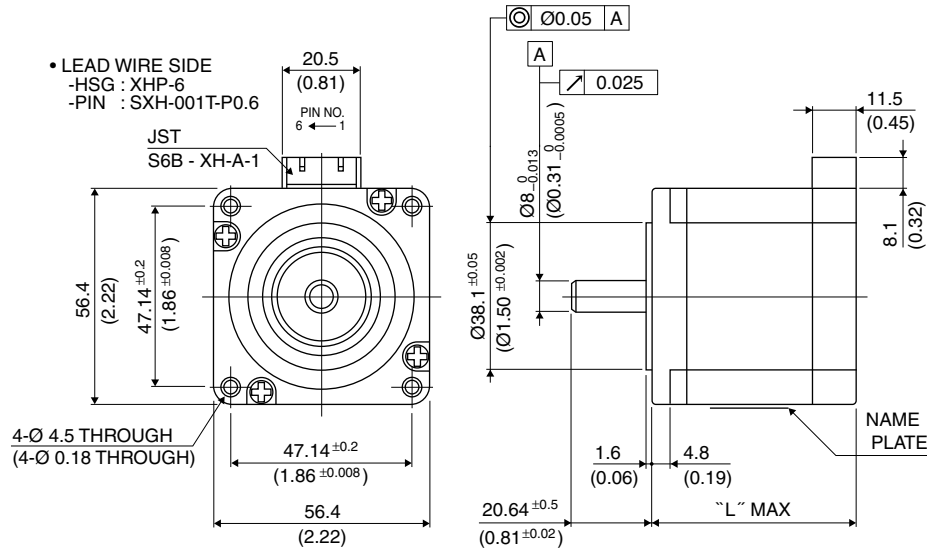


# 56□ 1.8°

# 23KM-H

# 1.8°

## ■ Outline



Hybrid

PIN NO. vs. PHASE

(PHASE)	A	A COM	$\bar{A}$	B	B COM	$\bar{B}$
(PIN NO.)	1	2	3	4	5	6

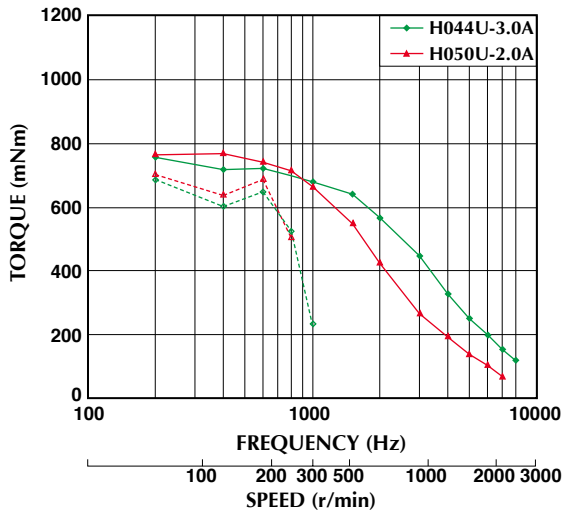
	"L"
23KM-H2**	43 (1.69)
23KM-H3**	51 (2.01)
23KM-H0**	55 (2.16)
23KM-H7**	77 (3.03)

## ■ Specifications

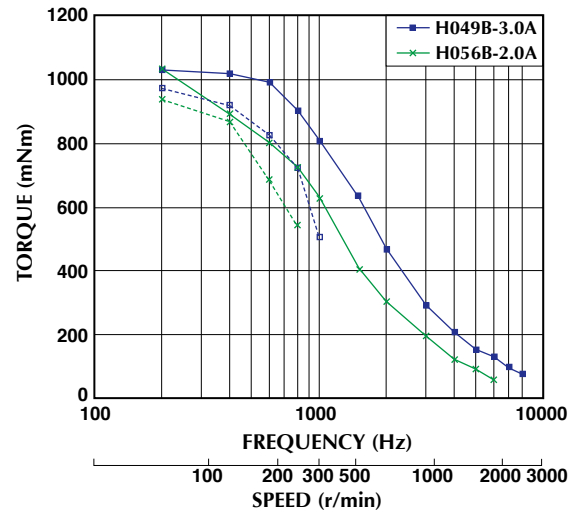
Model	Step Angle (deg)	Drive Sequence	Rated Current (A)	Resistance (Ohms)	Holding Torque (mNm)	Inductance (mH)	Rotor Inertia (g · cm <sup>2</sup> )	Detent Torque (mNm)	Mass (g)
23KM-H050U	1.8	UNI-POLAR	2.0	1.8	1000	4.2	320	54	680
23KM-H044U	1.8	UNI-POLAR	3.0	0.9	1000	1.7	320	54	680
23KM-H250U	1.8	UNI-POLAR	2.0	1.4	590	1.8	180	47	470
23KM-H244U	1.8	UNI-POLAR	3.0	0.7	590	0.9	180	47	470
23KM-H349U	1.8	UNI-POLAR	2.0	1.6	900	2.6	275	49	590
23KM-H344U	1.8	UNI-POLAR	3.0	0.8	900	1.3	275	49	590
23KM-H749U	1.8	UNI-POLAR	2.0	2.5	1620	5.3	550	93	1050
23KM-H743U	1.8	UNI-POLAR	3.0	1.2	1620	2.2	550	93	1050
23KM-H056B	1.8	BI-POLAR	2.0	1.7	1330	7.3	320	54	680
23KM-H049B	1.8	BI-POLAR	3.0	0.9	1330	3.7	320	54	680
23KM-H256B	1.8	BI-POLAR	2.0	1.3	750	3.8	180	47	470
23KM-H248B	1.8	BI-POLAR	3.0	0.6	750	1.7	180	47	470
23KM-H355B	1.8	BI-POLAR	2.0	1.5	1020	5.4	275	49	590
23KM-H348B	1.8	BI-POLAR	3.0	0.7	1020	2.6	275	49	590
23KM-H755B	1.8	BI-POLAR	2.0	2.3	2200	10.5	550	93	1050
23KM-H748B	1.8	BI-POLAR	3.0	1.2	2200	4.9	550	93	1050

## Torque/Speed Characteristics

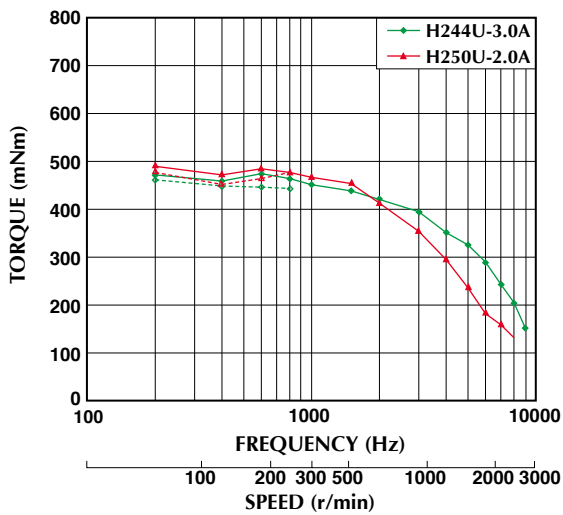
Model No: 23KM-H044U,H050U  
 Driver: Chopper Dual  
 Supply Voltage: 24.0 (Volt)



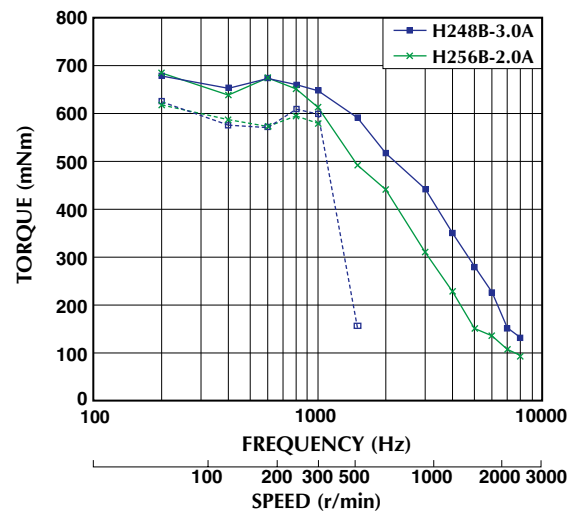
Model No: 23KM-H049B,H056B  
 Driver: Chopper Dual  
 Supply Voltage: 24.0 (Volt)



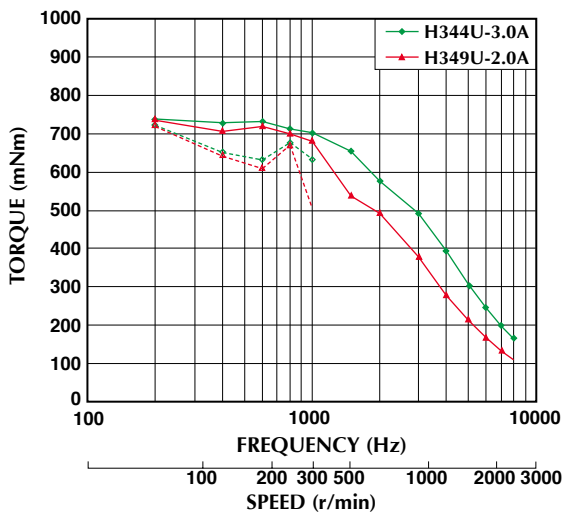
Model No: 23KM-H244U,H250U  
 Driver: Chopper Dual  
 Supply Voltage: 24.0 (Volt)



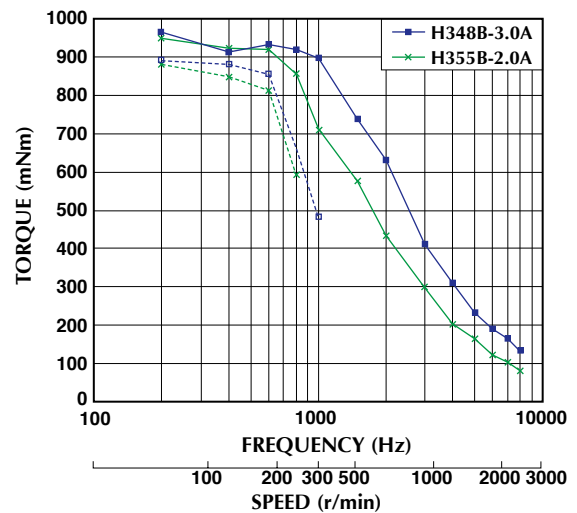
Model No: 23KM-H248B,H256B  
 Driver: Chopper Dual  
 Supply Voltage: 24.0 (Volt)



Model No: 23KM-H344U,H349U  
 Driver: Chopper Dual  
 Supply Voltage: 24.0 (Volt)



Model No: 23KM-H348B,H355B  
 Driver: Chopper Dual  
 Supply Voltage: 24.0 (Volt)

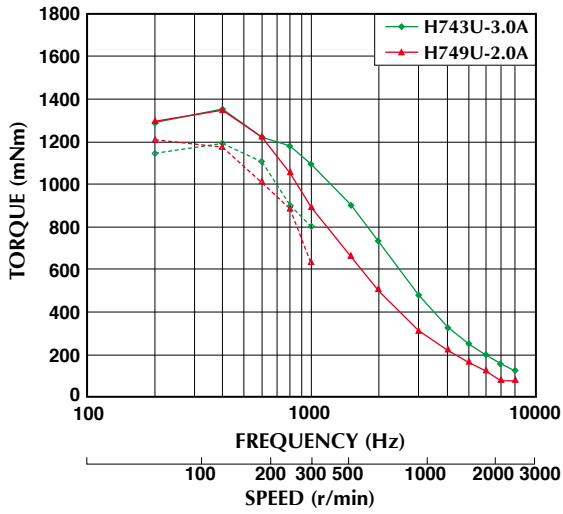


— : PULL OUT  
 - - - : PULL IN

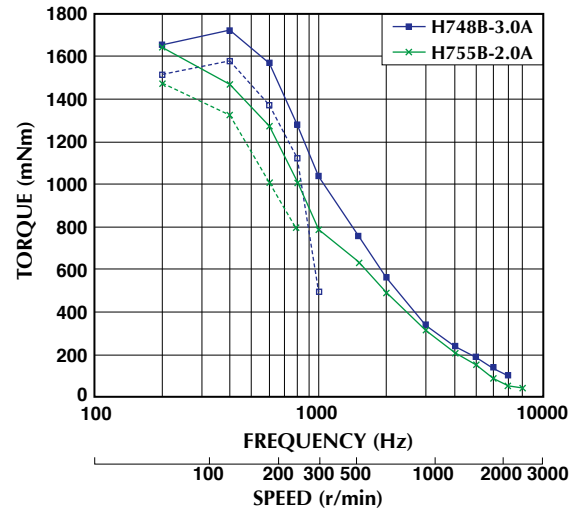
Torque/Speed characteristics are for reference only and it may change when operated at different drive conditions.

## Torque/Speed Characteristics

Model No: 23KM-H743U,H749U  
 Driver: Chopper Dual  
 Supply Voltage: 24.0 (Volt)



Model No: 23KM-H748B,H755B  
 Driver: Chopper Dual  
 Supply Voltage: 24.0 (Volt)



— : PULL OUT  
 - - - : PULL IN

Torque/Speed characteristics are for reference only and it may change when operated at different drive conditions.